



Josh Redhead and Ray Winwood-Smith – Winners of the 2024 DAMESA Industries Stages.
Photo courtesy of Roy Meuronen Photography

Service Instructions

13th September 2025

Round 5 of the NSW State Rally Championship
Round 5 of the East Coast Classic 2WD Rally Series
Round 5 of the East Coast Classic 4WD Rally Series
Round 4 of the NSW Clubman Rally Series
Round 6 of the Techworkz Automotive ACT Regional Rally Series



Welcome to the 2025 Techworkz Automotive Stages and Horizon Apartments Narooma Forest Rally hosted by the Brindabella Motor Sport Club. The service park is conveniently located near the main Highway and adjacent to Rally HQ. The area is on a grass park so if we follow some very basic rules, we will be back here next year.

Competitors with large, heavy trucks are not to drive onto the grassed areas. Competitors may use the gravel/asphalt car parks at the Bill Smyth Oval.

Please take all your rubbish with you! During refuelling please ensure no fuel spills onto the ground and the same applies to oils and coolants. Remember safety is important so be careful when working under a car and no smoking near any refuelling.

At the conclusion of the event there will be a presentation in Montague Room at Club Narooma (Rally HQ). They have a fantastic bistro choice for all crews and spectators, hope to see you there.

For fuel calculations distances are:

Techworkz Automotive Stages:

From Start to Service 1		
Service Time		60 minutes
Total	Liaison	Competitive
152	67	85
From Service 1 to Service 2		
Service Time		40 minutes
Total	Liaison	Competitive
134	66	68
From Service 2 to Finish		
Service Time		NIL
Total	Liaison	Competitive
49	25	24



From Start to Remote Refuel 1		
Total	Liaison	Competitive
30.5	17	13.5
From Remote Refuel 1 to Remote Refuel 2		
Total	Liaison	Competitive
74.6	34.6	40
From Remote Refuel 2 to Service 1		
Total	Liaison	Competitive
52.2	21.2	31

From Start to Remote Refuel 2		
Total	Liaison	Competitive
105.1	51.6	53.5

From Service 1 to Remote Refuel 3		
Total	Liaison	Competitive
63	25	38
From Remote Refuel 3 to Service 2		
Total	Liaison	Competitive
71.4	40.6	30.8

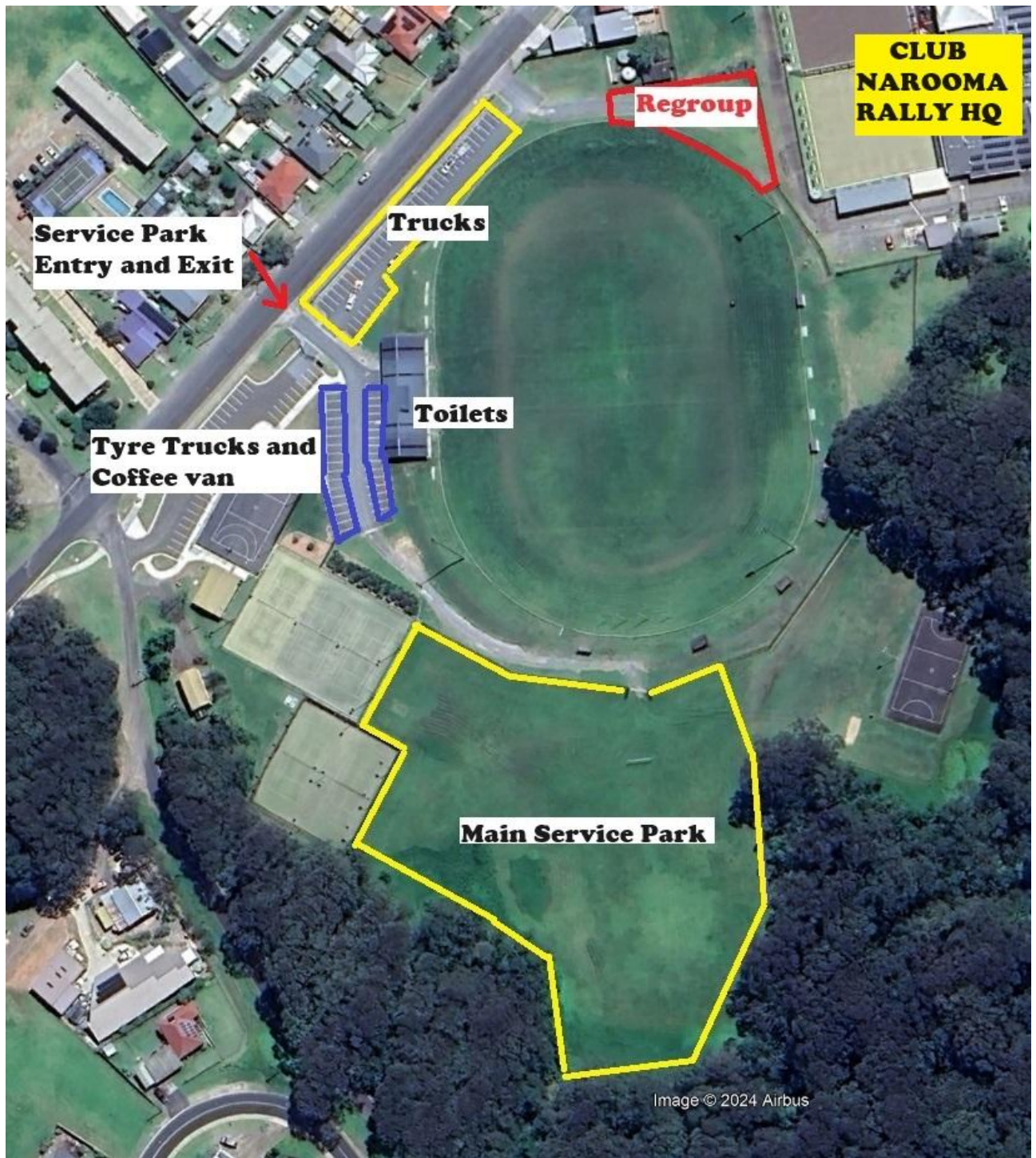
Horizon Apartments Narooma Forest Rally:

From Start to Service 1		
Service Time		60 minutes
Total	Liaison	Competitive
152	67	85
From Service 1 to Finish		
Service Time		40 minutes
Total	Liaison	Competitive
134	66	68



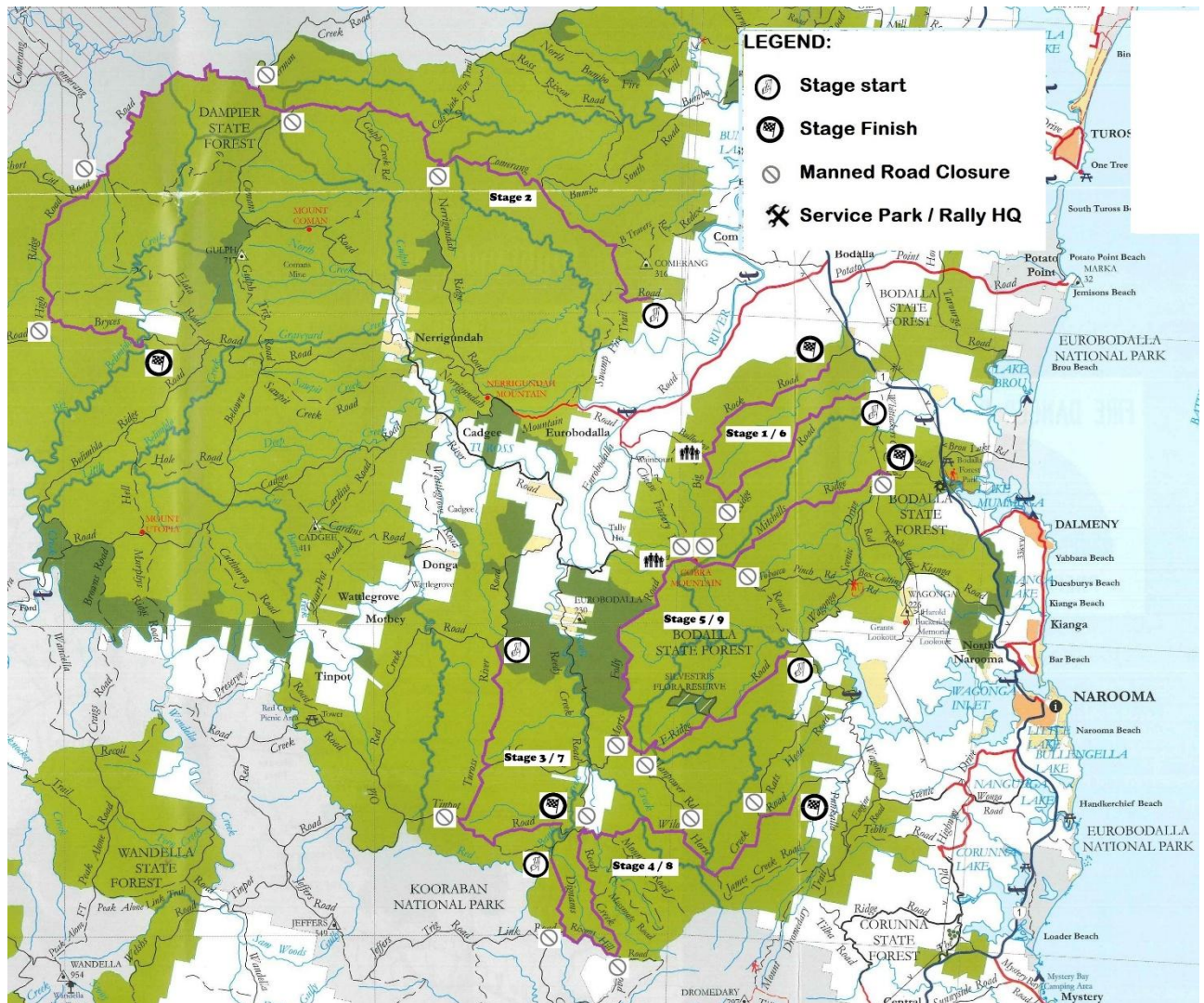
From Start to Remote Refuel 1					
Total	Liaison	Competitive			
30.5	17	13.5			
From Remote Refuel 1 to Remote Refuel 2			From Start to Remote Refuel 2		
Total	Liaison	Competitive	Total	Liaison	Competitive
74.6	34.6	40	105.1	51.6	53.5
From Remote Refuel 2 to Service 1					
Total	Liaison	Competitive			
52.2	21.2	31			

Service park diagram



[illegible]

Overview of Stages



Directions to Remote Refuels

Directions to Remote Refuel 1 and 3 (Between Stages 1 and 2, Stages 6 and 7)

- Turn right from Service Park, then turn left at roundabout.
- Head North on Princes Highway.
- Follow for 16.3 kilometres.
- 60km/h – Bodalla
- Follow for 250 metres
- Turn right into the Bodalla Oval Carpark.
(36° 06' 07.24"S 150° 03' 17.43"E)

This is a public carpark. **DO NOT BLOCK ACCESS FOR THE PUBLIC.**



Directions to Remote Refuel 2 (Between Stage 2 and Stage 3)

- From Remote Refuel 1, return to Princes Highway and turn right (into Bodalla).
- Follow for 1.2 kilometres.
- Turn left onto Eurobodalla Road (Opposite Police station).
- Follow for 17.9 kilometres.

CAUTION: AFTER 2.6 kms – TWO WAY RALLY TRAFFIC

- Refuel area is on left before the turnoff to Tuross River Road (on left)
- Return to Service Park after Remote Refuel 2.



Directions to the start of stages (From Bill Smyth Oval)

Stage 1 / 6: WOLF 1 and 2:

- Turn right from Service Park, then turn Left at roundabout.
- Head North on Princes Highway.
- Follow for 13.1 kilometres.
- Turn left onto C-Ridge Road.
- Follow for 650 metres. (36° 7'45.00"S 150° 4'0.35"E)

Stage 2: Maisie's Place:

- Turn right from Service Park, then turn left at roundabout.
- Head North on Princes Highway.
- Follow for 16.3 kilometres.
- 60km/h – Bodalla
- Follow for 1.5 kilometres
- Turn left onto Eurobodalla Road (Opposite Police station).
- Follow for 2.6 kilometres.
- Turn right onto Comerang Road.
- Follow for 3.7 kilometres. (36° 06' 27.4"S 149° 59' 56.8"E)

Stage 3 / 7: PCD Engineering 1 and 2:

- Turn right from Service Park, then turn left at roundabout.
- Head North on Princes Highway.
- Follow for 16.3 kilometres. 60 km/h (Bodalla)
- Continue on Princes Highway for another 1.5 kilometres.
- Turn left onto Eurobodalla Road.
- Follow for 18.1 kms. **Note: Eurobodalla Road becomes a gravel road after 10.1 kms.**
- Turn left onto Tuross River Road.
- Follow for 5.8 kilometres. (36° 12' 19.45"S 149° 56' 10.24"E)

Stage 4 / 8: Neal Bates Motorsport 1 and 2:

- Turn right from Service Park, then turn left at roundabout.
- Head North on Princes Highway.
- Follow for 16.3 kilometres. 60 km/h (Bodalla)
- Continue on Princes Highway for another 1.5 kms.
- Turn left onto Eurobodalla Road.
- Follow for 16.9 kms. **Note: Eurobodalla Road becomes a gravel road after 10.1 kms.**
- Turn left onto Reedy Creek Road. (36°10'52.96"S 149°57'43.27"E)
- Follow for 8.5 kms.
- Turn right onto Reedy Creek Road.
- Follow for 2.3 kms.
- Turn right onto Tinpot Road.
- Follow for 580 metres then keep left onto Dignams Creek Road.
- Follow for 1.6 kilometres to Time Control. (36°15'56.24"S 149°57'27.13"E)
- **CAUTION: There is a rough creek crossing (approximately 100 metres) before the time control.**

Stage 5 / 9: Simply Music Management 1 and 2:

- Turn right from Service Park, then turn left at roundabout.
- Head North on Princes Highway.
- Follow for 3.6 kilometres.
- Turn left onto Kianga Road (Just after bridge). **Caution – two way traffic.**
- Follow for 4.2 kilometres.
- Keep right onto Box Cutting Road.
- Follow for 2.2 kilometres. Road goes Hard Left.
- Follow for another 3.2 kilometres to a concrete bridge. After the bridge, the road goes Hard left onto a second bridge. After the second bridge, turn Right onto F-Ridge Road.
- Follow for 1.1 kilometres to the Time Control. (36°12' 24.05"S 150°02' 15.50"E)

Directions to the end of stages (Stop Controls) (From Bill Smyth Oval)

Stage 1 / 6: WOLF 1 and 2:

- Turn right from Service Park, then turn left at roundabout.
- Head North on Princes Highway.
- Follow for 14.8 kilometres.
- Turn left onto Big Rock Road (Hard to see).
- Follow for 1.4 kilometres. **CAUTION: HUMP at 1.1 kms**
- Stop Control (36° 07' 23.02"S 150°03' 02.66"E)

Stage 2: Maisie's Place:

- Turn right from Service Park, then turn left at roundabout.
- Head North on Princes Highway.
- Follow for 16.3 kilometres. 60 km/h (Bodalla)
- Continue on Princes Highway for another 1.5 kms.
- Turn left onto Eurobodalla Road. Follow signs to Nerrigundah.
- Follow for 8.9 kms.
- Turn right (Signposted Nerrigundah Mountain Road)
- Follow for 9.3 kilometres then turn right over bridge to stay on Eurobodalla Road.
- Turn right at Cenotaph (War memorial). Follow for 300 metres.
- At the end of the bitumen, keep left onto Belowra Road.
- Follow for 4.9 kilometres
- Turn right onto Bryces Road. Don't turn hard right. Follow main road.
- Follow for 5.2 kilometres. (36° 07' 1.03"S 149° 48' 36.72"E)

Stage 3 / 7: PCD Engineering 1 and 2:

- Turn right from Service Park, then turn left at roundabout.
- Head North on Princes Highway.
- Follow for 16.3 kilometres. 60 km/h (Bodalla)
- Continue on Princes Highway for another 1.5 kms.
- Turn left onto Eurobodalla Road.
- Follow for 16.9 kms. **Note: Eurobodalla Road becomes a gravel road after 10.1 kms.**
- Turn left onto Reedy Creek Road. (36°10'52.96"S 149°57'43.27"E)
CAUTION! POSSIBLE TWO-WAY TRAFFIC
- Follow for 8.5 kms.
- Turn right to stay on Reedy Creek Road.
- Follow for 2.3 kms.
- Turn right onto Tinpot Road.
- Follow for 580 metres (36°15'31.00"S 149°57'50.59"E)

Stage 4 / 8: Neal Bates Motorsport 1 and 2:

- Turn right from Service Park, then turn right at roundabout.
- Head South on Princes Highway for 2.6 kilometres.
- Turn right onto Old Princes Highway
- Follow for 2.6 kilometres. Turn right onto Wagonga Scenic Drive.
- Follow for 4.7 kms. **Note: Wagonga Scenic Drive becomes a gravel road.**
- Turn left onto Tilba Road (Just before Punkalla Bridge). (36°14' 03.80"S 150° 04' 04.37"E)
- Follow for 1.1 kms.
- Turn Right onto Wild Horse Creek Road.
- After 250m keep right. Follow for 1.9kms to the Stop Control. (36°14' 46.98"S 150° 02'39.83"E)

Stage 5 / 9: Simply Music Management 1 and 2:

- Turn right from Service Park, then turn left at roundabout.
- Head North on Princes Highway.
- Follow for 8.6 kilometres.
- Turn left onto Mitchell's Ridge Road.
- Follow for 1.8 kilometres. (36°09' 12.83"S 150° 04' 44.08"E)

Directions from end of stages to the Service Park**Stage 1 / 6: WOLF 1 and 2:**

- Follow Big Rock Road for 1.4 kilometres.
- Turn right onto Princes Highway. Follow for 15.5 kilometres.
- Turn right at roundabout, then 150 metres, turn left into Service Park.

Stage 2: Maisie's Place:

- Continue on Bryces Road for 5.2 kilometres.
- Turn left onto main road (unsignposted Belowra Road) and head down hill
- Follow for 4.6 kilometres.
- Keep right and follow for 360 metres onto bitumen.
- 50 km/h.
- Follow for 260 metres.
- Turn left at Cenotaph (War Memorial).
- Follow for 290 metres the Turn left and cross the bridge (Signposted: Bodalla). **DO NOT TAKE THE OTHER ROAD TOWARDS BODALLA – it is much longer.**
- Follow main road for 9.3 kilometres.
- Turn Left on Eurobodalla Road (Signposted: Bodalla)
- Follow for 8.9 kilometres.
- Turn right onto Princes Highway. Follow for 17.8 kilometres.
- Turn right at roundabout, then 150 metres, turn left into Service Park.

Stage 3 / 7: PCD Engineering 1 and 2:

- Turn left onto Tinpot Road. Follow for 500 metres.
- Turn left onto Reedy Creek Road and follow for 2.3 Kilometres.
- Turn left to stay on Reedy Creek Road. Follow for 8.5 kilometres.
- Turn right onto Eurobodalla Road. Follow for 16.9 kilometres.
- Turn right onto Princes Highway. Follow for 17.8 kilometres.
- Turn right at roundabout, then 150 metres, turn left into Service Park.

Stage 4 / 8: Neal Bates Motorsport 1 and 2:

- Continue along Wild Horse Creek Road for approximately 2.2 kilometres.
- Turn left onto Tilba - Punkalla Road (Signposted: Narooma).
- Follow for 1.1kms
- Turn right onto Wagonga Scenic Drive.
- Follow for 4.7 kilometres.
- Turn left onto Old Highway. Follow for 2.6 kilometres.
- Turn left onto Princes Highway. Follow for 2.6 kilometres.
- Turn left at roundabout then 150 metres, turn left into Service Park.

Stage 5 / 9: Simply Music Management 1 and 2:

- Continue along Mitchell's Ridge Road for approximately 1.8 kilometres.
- Turn right onto the Princes Highway.
- Follow for 8.6 kilometres.
- Turn right at roundabout, then 150 metres, turn left into Service Park.